

International Society of Nephrology (ISN) Fellowship on Glomerular Diseases (12 Months)

Host Institution: Department of Nephrology, Christian Medical College Vellore, India

Vision Statement: Christian Medical College (CMC) Vellore seeks to be a witness to the healing ministry of Christ, through excellence in education, service and research.

Program Director-

Dr. Suceena Alexander MD, DM (Nephrology), FRCP (Lon.), FASN, PhD

Professor and HoU (Nephro Unit III)

Faculty-in-charge (Nephrology Lab)

Department of Nephrology, Christian Medical College Vellore, India

Fellowship Co-ordinator-

Dr Manish Lalwani, MD, DM (Nephro), DNB (Nephro)

Associate Professor

Nephrology Unit III

Department of Nephrology, Christian Medical College Vellore, India

1. Program Overview

Program Overview & Eligibility

- **Focus:** This **12-month fellowship** provides advanced clinical and academic training in managing **glomerular diseases**.
- **Emphasis:** The program focuses on **evidence-based care**, clinicopathological correlation, and multidisciplinary management within a high-volume tertiary care setting.
- **Eligibility:** **India-** Candidates must have a **DM/DNB in Nephrology** (or equivalent), with a preference for those with prior nephrology training exposure. **International-** Nephrology post-graduate trainees or faculty.
- **Selection:** The selection process is conducted through the **ISN (International Society of Nephrology)**.

2. Program Objectives

2.1 Clinical Competence

- Independently evaluate and manage glomerular diseases
- Diagnose and treat systemic autoimmune diseases with renal involvement
- Manage nephrology emergencies, including rapidly progressive glomerulonephritis

2.2 Diagnostic Expertise

- Interpret urine microscopy

- Analyze immunological and serological investigations
- Perform clinicopathological correlation using renal biopsy findings
- Independently perform kidney biopsy

2.3 Therapeutic Competence

- Prescribe immunosuppressive therapy safely and effectively
- Manage therapy-related complications (infections, drug toxicity)
- Apply current clinical practice guidelines

3. Core Curriculum

3.1 Primary Glomerular Diseases

- Minimal Change Disease
- Focal Segmental Glomerulosclerosis
- Membranous Nephropathy
- IgA Nephropathy
- C3 glomerulonephritis

3.2 Secondary Glomerular Diseases

- ANCA-associated vasculitis
- Anti-GBM disease
- Cryoglobulinemia
- Connective tissue disease-associated vasculitis
- Thrombotic microangiopathy
- Infection-related GN
- Lupus nephritis
- Monoclonal gammopathy-associated renal disease
- Fibrillary and Immunotactoid Glomerulonephritis
- Amyloid
- Drug related Glomerulonephritis

3.3 Hereditary glomerular diseases

- Alport syndrome and others

3.4 Diagnostic Modalities

- Urine microscopy and sediment analysis
- Serological tests (ANA, ANCA, complements, anti-GBM)
- Renal biopsy: indications, complications, interpretation

3.5 Renal Pathology

- Light microscopy
- Immunofluorescence

- Electron microscopy

In Renal pathology laboratory posting a fellow needs to learn essential laboratory skills. This includes proper handling of kidney biopsy tissue by dividing it appropriately for light microscopy, immunofluorescence, and electron microscopy, and using the correct fixatives such as formalin, Michel's medium, and glutaraldehyde. The fellow should understand the basic steps of tissue processing, from fixation and embedding to sectioning and staining, including how frozen sections are prepared for immunofluorescence. In immunopathology, they are expected to perform and interpret immunofluorescence studies, choose suitable antibodies, troubleshoot common issues, and recognize the difference between true deposits and artefacts. They should also gain familiarity with electron microscopy, including how samples are prepared, how ultrathin sections are made, and how to interpret ultrastructural findings in kidney disease

3.6 Therapeutics

- Corticosteroids
- Cyclophosphamide
- Mycophenolate mofetil
- Calcineurin inhibitors
- Biologic agents
- Plasmapheresis (indications and protocols)
- Newer therapeutic molecules

4. Training Methods

- Supervised inpatient and outpatient care
- Dedicated glomerular disease clinics
- Renal biopsy meetings with pathology department
- Multidisciplinary discussions (Nephrology, Rheumatology, Pathology)
- Journal clubs and seminars

5. Procedural Requirements

The fellow is expected to:

- Assist/perform at least 15–20 renal biopsies
- Participate in biopsy interpretation sessions
- Gain exposure to plasmapheresis procedures

6. Academic Requirements

- Case presentations: 2–3 per month (total ~8 presentations over 4 months)
- Journal club presentations: Minimum 4
- Active participation in academic activities (especially biopsy discussions on Tuesdays and Fridays)

Research Requirement (Complete one):

- Case series suitable for publication
or
- Original research article

Additional Requirement

- One Quality Improvement Audit

7. Logbook

A certified logbook must be maintained documenting:

Clinical Work

- Cases managed (including structured GN case discussions and protocol-based presentations)

Procedures

- Urine microscopy
- Renal biopsy (performance and assistance)
- Biopsy slide interpretation

Academic Activities

- Case presentations
- Biopsy discussions

Research Work

8. Assessment

- Continuous faculty evaluation
- Case-based discussions
- Direct observation of procedural skills

9. Exit Examination

9.1 Theory

- Short answer questions
- MCQS

9.2 Clinical Examination

- One long case (GN/vasculitis)
- Two short cases

9.3 OSCE Stations

- Urine analysis interpretation
- Serology interpretation
- Clinical scenarios
- Renal biopsy interpretation

9.4 Viva Voce

- Renal pathology (slides/images)
- Pharmacology (drug viva)
- Recent advances and guidelines

9.5 Logbook Review

- Candidates will be provided with a logbook in which they are required to record descriptions of case presentations, questions discussed with mentors, and brief summaries of updated trials and important findings. A separate section will be maintained for documenting biopsies performed and biopsy discussions attended. Candidates must also complete sections detailing research work undertaken and quality improvement projects conducted. At the end of the fellowship, trainees are required to bring the logbook on the day of the examination, duly pre-signed by the internal examiner.

10. Certification

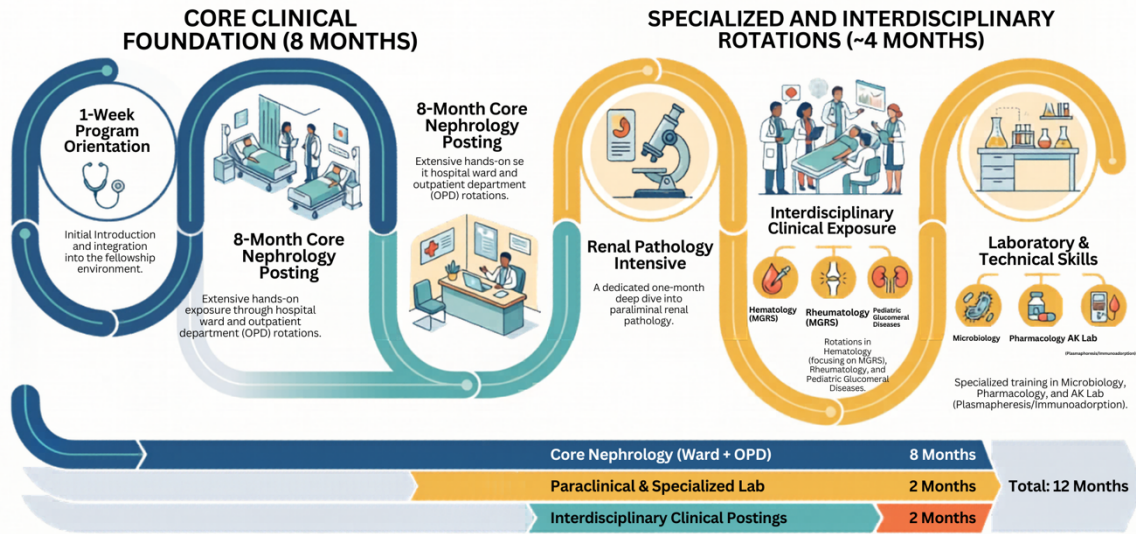
Candidates who successfully complete the following will be awarded a **Fellowship Certificate in Glomerular Diseases and Systemic Vasculitis** by Christian Medical College, Vellore.

- Required training
- Logbook
- Exit examination

11. Recommended Resources

- KDIGO Clinical Practice Guidelines
- Standard nephrology textbooks
- Peer-reviewed journals

The ISN Fellowship in Glomerular Diseases: A 12-Month Roadmap



© 2025 NephrologyLM